



Giving Shape to Ideas



Full-Digital Label Production System

bizhub PRESS C71cf



Technology Preview

Advantages.

Our leading-edge digital print technology satisfies the market needs. A print system with totally new concept adds a new value to the label printing.

High Image Quality & High-Accuracy Printing

High resolution & multiple gradation data processing at 1200 dpi x 8 bit.

High Speed Printing

Maximum 18.9m/min (approximately 62ft/min) production speed. Note: Print speed selectable from 18.9, 13.5, 9.45m/sec (approximately 62, 44, 31ft/min).

Highly Light Resistant

New toners with light resistance equivalent to the similar inks for offset printing are adopted.

Continuous Banner Size Printing

Continuous printing of max. 1195 x 320mm (approximately 47 x 12-1/2in) is supported.

Superb Operability & Ease of Maintenance

Easy to control color and reprints compared to analog machines.

Low Running Cost

Easily handles various short-run jobs with low cost.



Target Applications (Example)

Target market: Small to medium volume label printing market.



A. Wine Label



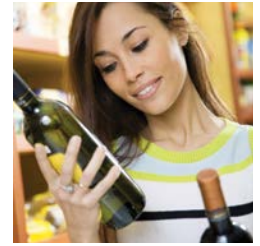
B. Cheese Label



C. Cosmetic Label



D. GHS Label



TECHNICAL SPECIFICATIONS

Print Method	Dry-toner electrophotography
Color Support	Full color (CMYK)
Printing Resolution / Gradation	1200dpi (3600dpi equivalent) x 1200dpi/8bit
Max. Printing Image Size	1195 x 320mm (approx. 47 x 12-1/2in)
Max. Paper Width	330mm (approx. 13in)
Image Width	Max. 320mm (approx. 12-1/2in) Quality guarantee width: 297mm (approx. 11-2/3in)
Max. Unwinder/Rewinder Diameter	500mm (approx. 20in)
Paper Thickness Range	60 to 250µm (64 to 256gsm)
Feeding Speed	18.9m/min, 13.5m/min, 9.45m/min (approx. 62 ft/min, 44 ft/min, 31 ft/min) *Feeding speed needs to be changed depending on the paper type. (standard speed: 13.5m/44 ft)
Print Image File Format	PDF, PS (support APPE), 8bit TIFF
VDP File Format	PPML, PDF/VT PDF/VT requires APPE Option (UK-207)
Printing Media *detail: refer to below list	Paper: non-tack paper, tack paper Film: tack film (synthetic paper, PP, PET)
Power Requirements	Engine: single phase 208-240V 21A 60Hz Unwinder/Rewinder: Three phase 200V 12A less 3.4kW 50-60Hz
Operating Conditions	Temperature: 10 to 30°C (approx. 50 to 86°F), Humidity: 10 to 80%RH No condensation. 20%RH to 10%RH (gradually decreases) at 10 to 20°C (approx. 50 to 68°F) [Image quality guarantee range] Temperature: 18 to 23°C (approx. 64 to 73°F), Humidity: 40 to 60%RH
Weight	Approx. 910kg (approx. 2006 lb) (all units included) Printer engine: 280kg (approx. 617 lb), Roll feeder: approx. 320kg (approx. 661 lb), Roll winder: approx. 310kg (approx. 640 lb)

MEDIA

Media ^{*1}		Non-Tack Paper	Tack Paper (Peeling paper only. Total thickness including substrate is 250µm or less)
Paper	Plain Paper	64 to 256gsm (60 to 250µm)	Weight of base material: 64 to 120gsm
	Gloss Coated Paper		
	Matte Coated Paper		
Film	Synthetic Paper (YUPO ^{®3})	-	Thickness of base material: 50 to 120µm ^{*2}
	PP		
	PET (Stretched Type)		

*1: Incompatible depending on the media type.

*2: Roll composed of only chemical film for both base material and peeling sheet not compatible.

*3: YUPO is a registered trade mark of Yupo Corporation.



KONICA MINOLTA