



ON-A-ROLL LIFTER® GRANDE MAX

Need a workhorse lifter that can manage large or heavy rolls? The Foster On-a-Roll Lifter® Grande Max is just the ticket. Designed specifically for roll converters, package printers, and other businesses needing to handle very heavy media, this beefy lifter lets one operator move rolls as heavy as 2,200 lbs (1,000 kg). The specially designed tray accommodates rolls for easy loading and unloading, as well as transporting.



IMPORTANT FEATURES

- Specially designed tray for easy loading and unloading rolls
- Four heavy duty swivel locking casters
- Reduces on-the-job injuries and enables all workers to move heavy rolls
- User-friendly operation avoids costly and dangerous handling mistakes that damage media
- Rugged construction ensures long lifter life
- Single-person operation saves labor and time

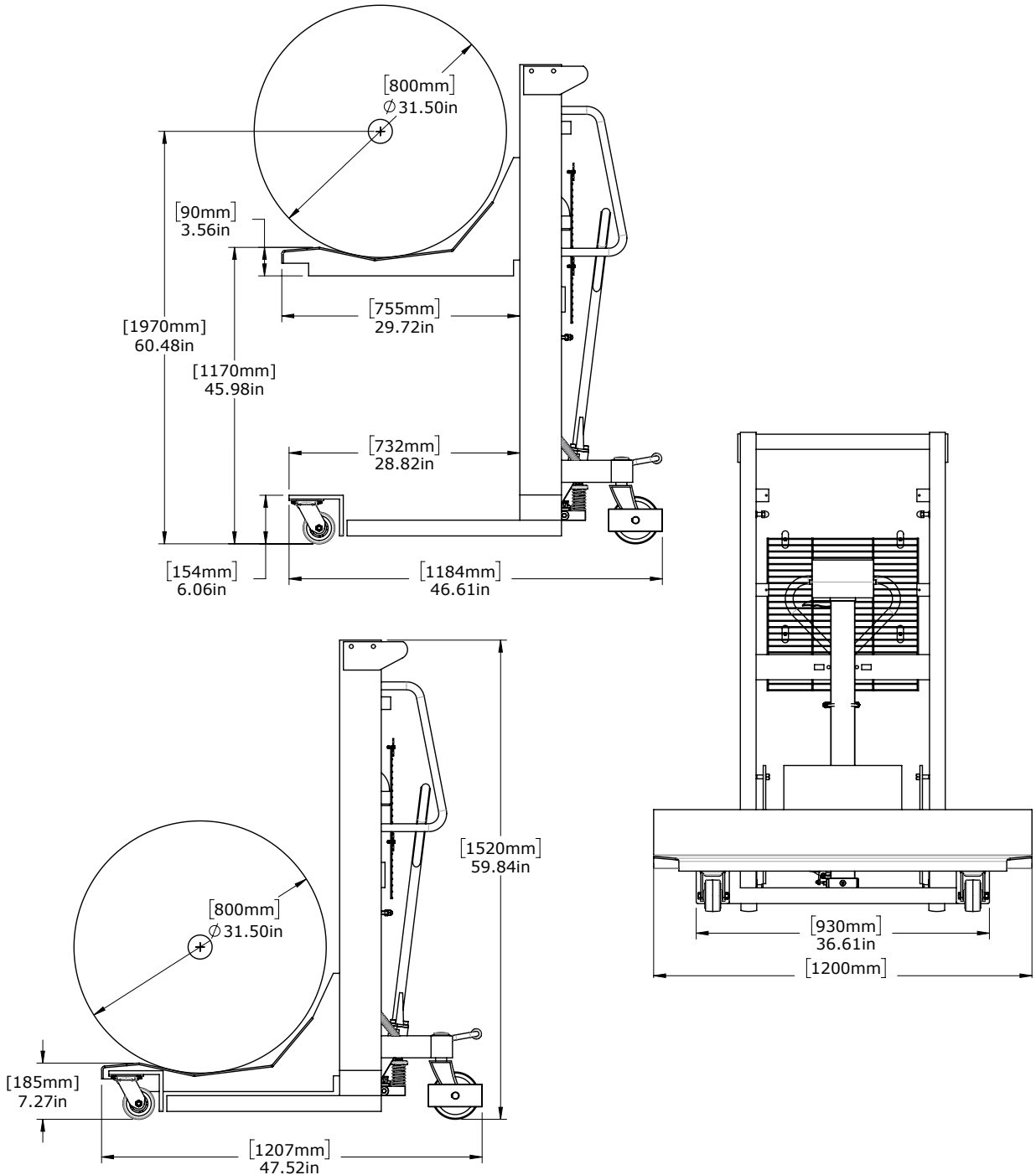
MODEL 61594

Roll Weight Capacity.....	1000 kg (2200 lbs)
Min. Tray Height	17.8 cm (7.01")
Lift Height	115 cm (42.25")
Front Swivel Castors.....	4" ø x 2"W
Rear Swivel Castors	6" ø x 2"W
Max. Roll Width	5 m (16'5")
Max. Roll Diameter	80 cm (31.5")
Width x Depth.....	83cm x 121.4cm (47.24" x 47.81")
Height.....	152 cm (59.84")
Bottom Fork Clearance	17.8cm (7")
Weight.....	205 kg (452 lbs)

See drawings and dimensions on page 2 to determine if the #61594 is right for you.



ON-A-ROLL LIFTER® GRANDE MAX SPECIFICATIONS 61594



2-YEAR WARRANTY on hydraulics and media tray.
5-YEAR WARRANTY on cross bars.

800.523.4855 or 267.413.6220 • fax 267.413.6227

204B Progress Drive, Montgomeryville, PA 18936 USA • information@go-foster.com • www.go-foster.com